

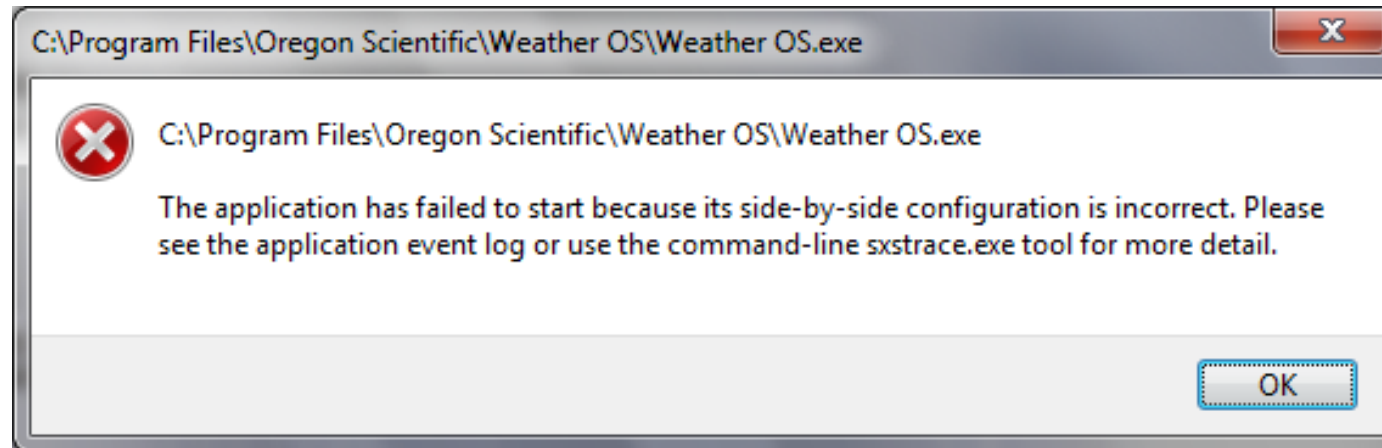
Weather OS for Windows 7
Trial version 1.2.01

Troubleshooting

Table of Content

1. Side-by-side error
2. Runtime error
3. Display close after loading
4. No multi-day weather data

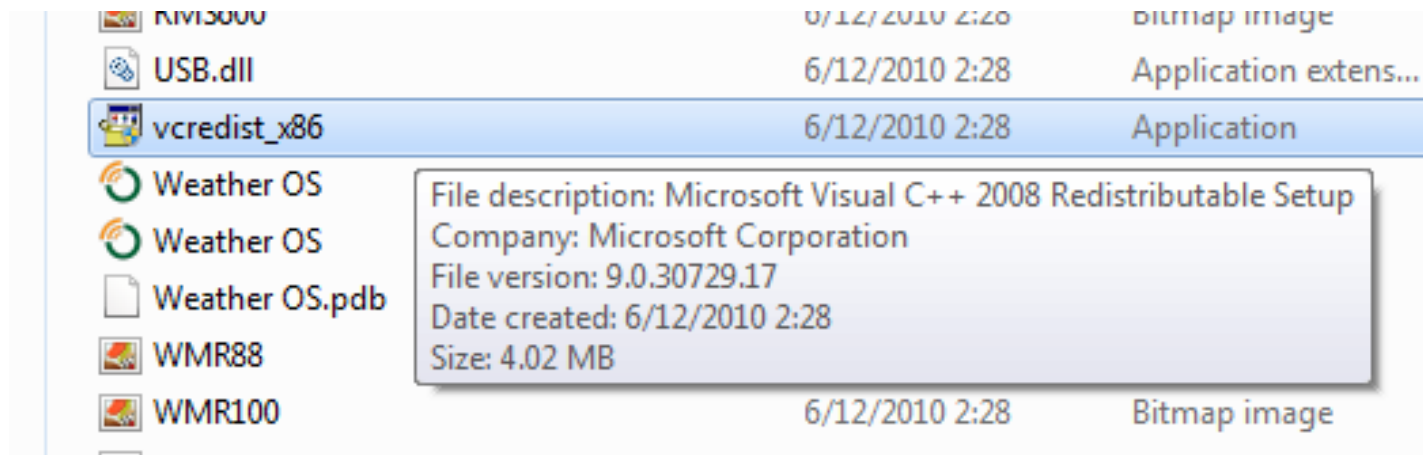
Troubleshooting - 1. Side-by-side error



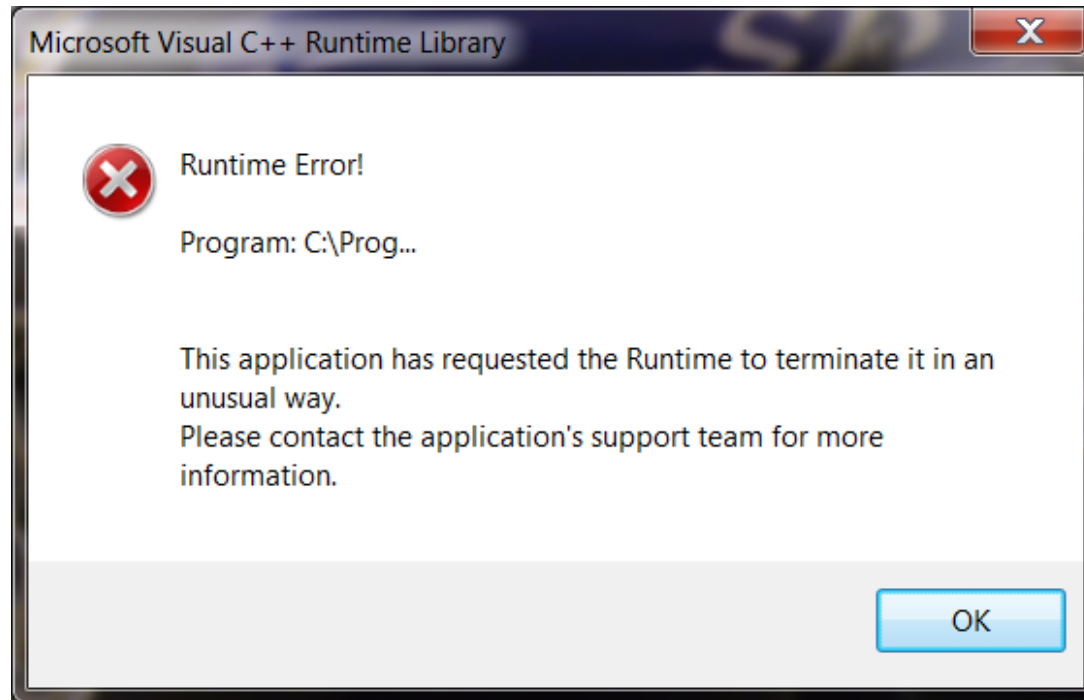
Troubleshooting - 1. Side-by-side error

Solution : Install Microsoft Visual C++ 2008 Redistributable Setup

- Step 1 : Double-click “vcredist_x86.exe” located in the installation folder **C:\Program Files (x86)\Oregon Scientific\Weather OS**
- Step 2 : Follow the procedures to finish setup



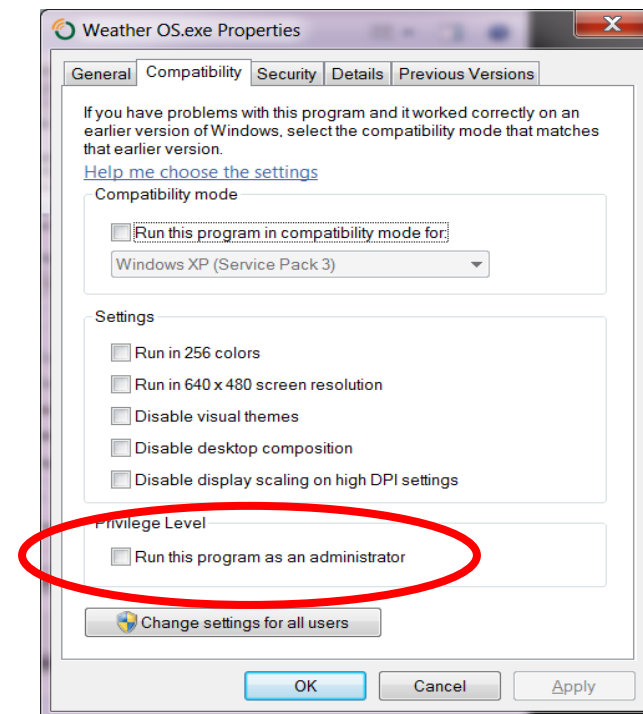
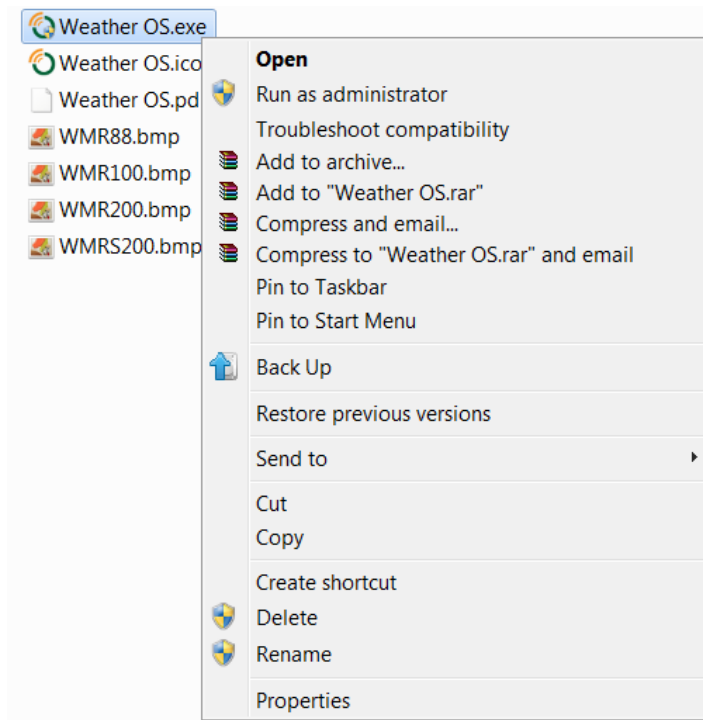
Troubleshooting - 2. Runtime error



Troubleshooting - 2. Runtime error

Solution : Ensure program is run as administrator

- Step 1 : Right-click “Weather OS.exe” located in the installation folder **C:\Program Files (x86)\Oregon Scientific\Weather OS**
- Step 2 : Click “Properties”
- Step 3 : Select “Compatibility”
- Step 4 : Check “Run this program as an administrator”



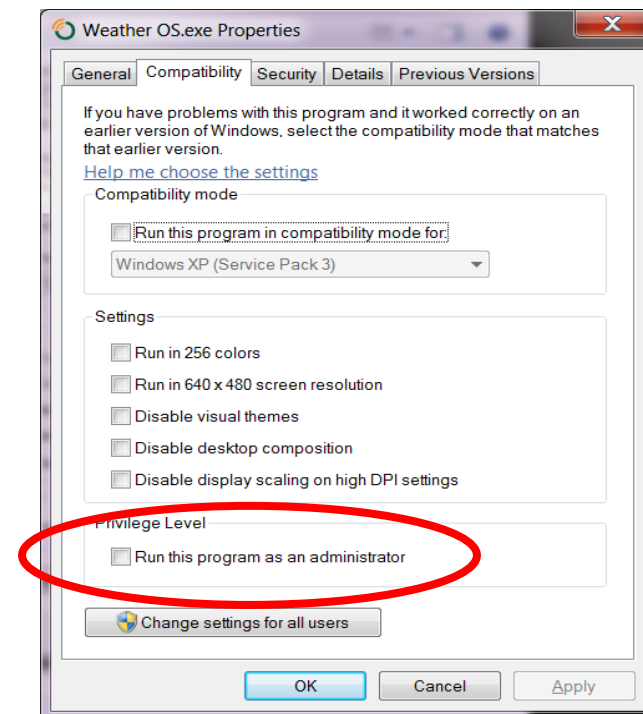
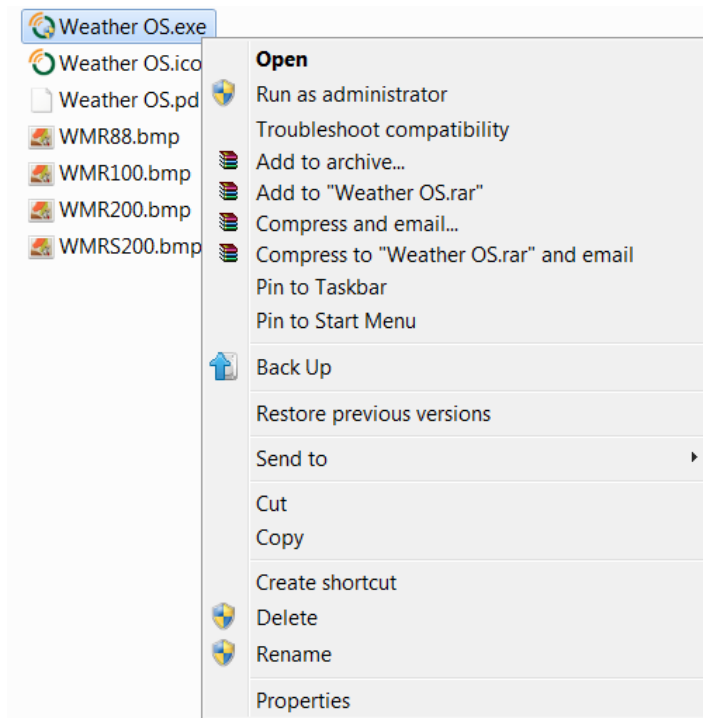
Troubleshooting - 3. "Display" close after loading



Troubleshooting - 3. "Display" close after loading

Solution : Ensure program is run as administrator

- Step 1 : Right-click "Weather OS.exe" located in the installation folder **C:\Program Files (x86)\Oregon Scientific\Weather OS**
- Step 2 : Click "Properties"
- Step 3 : Select "Compatibility"
- Step 4 : Check "Run this program as an administrator"



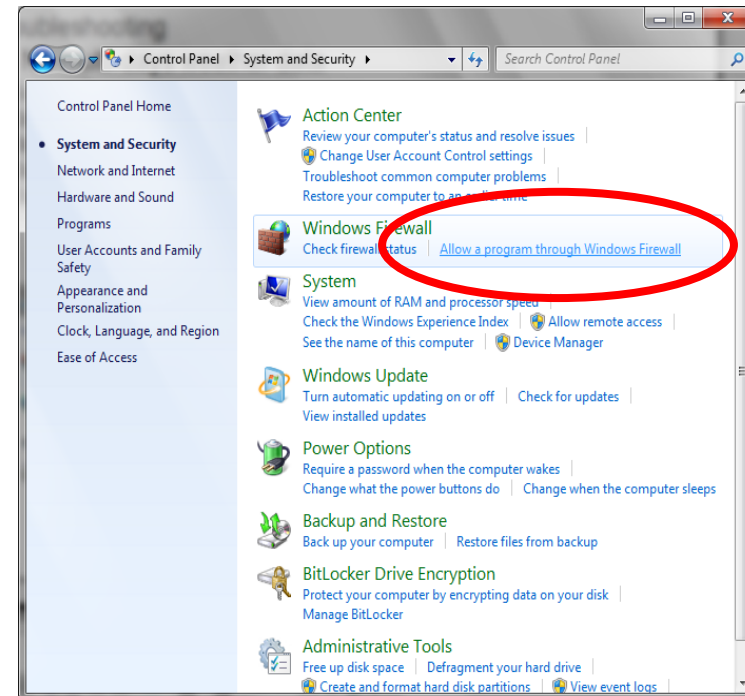
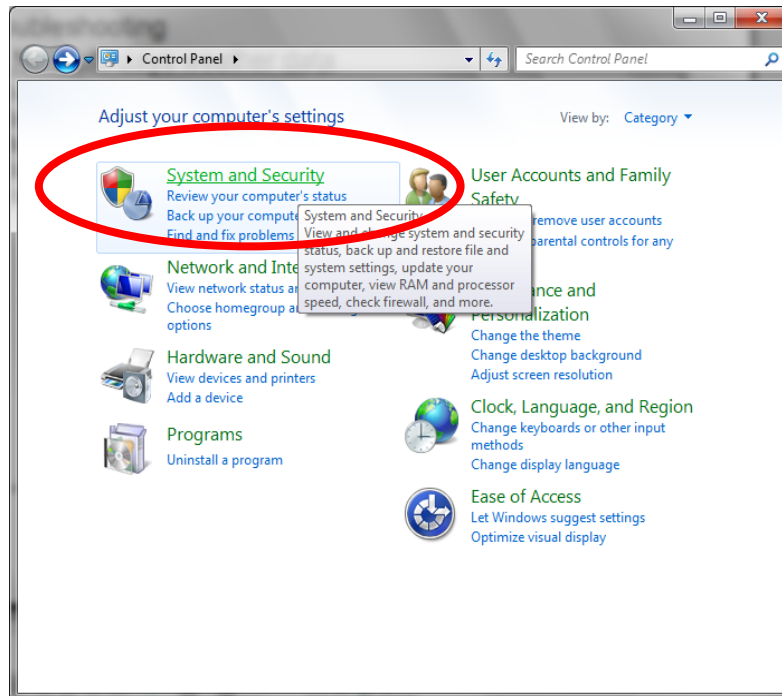
Troubleshooting - 4. No multi-day weather data



Troubleshooting - 4. No multi-day weather data

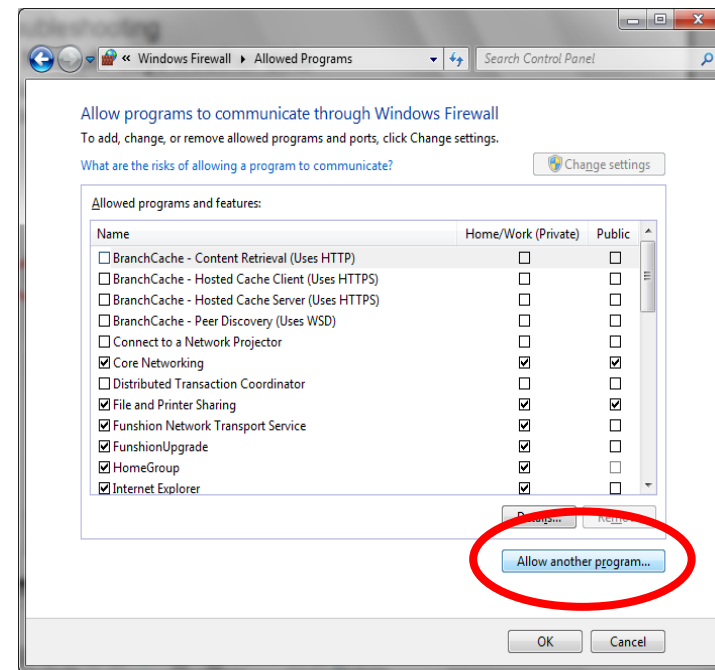
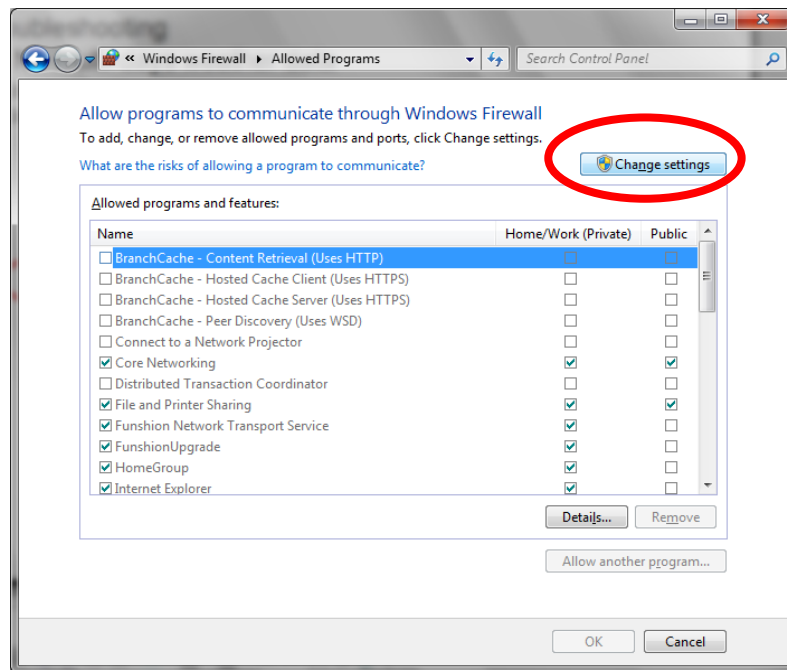
Solution : Ensure program is NOT blocked by Firewall

- Step 1 : Click “System and Security” in Windows Control Panel
- Step 2 : Click “Allow a program through Windows Firewall”



Troubleshooting - 4. No multi-day weather data

- Step 3 : Click “Change settings”
- Step 4 : Click “Allow another program”



Troubleshooting - 4. No multi-day weather data

- Step 5 : Click “Browse...”
- Step 6 : Select “Weather OS” in the installation folder **C:\Program Files (x86)\Oregon Scientific\Weather OS**, click “Open”
- Step 7 : Click “Add” - You should see “OREGON Station” is allowed now

